

## Test-report

No. Q MBL N 736 1839e

**Reported to:**

HÅG asa  
7366 Roros  
Norway

**Object:**

Four legged visitor's chairs without armrests  
models 9811, 9821, 9831, model range „Conventio Wing“  
(2 samples supplied by the manufacturer)

**Order:**

Safety test following DIN EN 1728 and  
DIN EN 13 761, as well as DIN 68 878 for of the GS-Label

**Findings:**

The test contained the following safety technical criteria according to the Equipment and Product Safety Act:

Functional dimensions, workmanship, stability to DIN EN 1022, ed. 09.2005, static and dynamic load. The tests were carried out following DIN EN 1728, ed. 08.2004, the requirements are laid out in DIN EN 13761, ed. 12. 2002, as well as DIN 68 878, part 1, ed. 01.1987.

Strength and stability showed no failure and **meet** the requirements for contractual use.

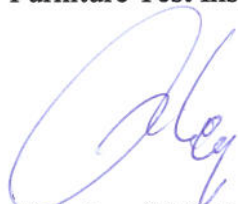
Technical data and details of the test are on the following pages.

**Note:**

In connection with the signed outline agreement the permission to use the **GS-Label** is given.

Nuremberg, 2007-01-29, modified 21/06/2007  
Q MBL N hy/ra/şe/ad

LGA QualiTest GmbH  
Furniture Test Institute



Dipl.-Ing. (FH) R. Heym  
Head of Competence Centre



Franz Rackl  
Test Officer

*The test report consists of 7 pages. Except when otherwise approved / licensed by LGA this test report may only be published and used in unabbreviated original phrasing and form. The test report contains the result of one single examination of the individual test sample and does not represent any universally valid evaluation of the qualities of all products from serial production. Should the content of the test report need any interpretation the German text shall be leading.*

## Test results

### Object

Article: Four legged Visitor's chairs (without armrests)  
Model: models 9811, 9821, 9831, model range „Conventio Wing“  
Number of samples: 2  
Delivered: 17.11.2006 and 11.06.2007  
Reg. No.: 955-1 and 469  
Delivered by: HÅG

### Scope of tests

General examination

Safety test to DIN EN 1728, ed. 08.2004, in connection with DIN EN 13 761, ed. 12.2002, Safety test DIN 68 878, ed. 01.1987 and DIN EN 1022, ed. 09.2005

- Functional dimensions
- Design
- Assembling instructions
- Stability
- Corrosion test
- Dynamic load test
- Static load test

### Applicability of test results

The test results refer solely to the samples tested. The digital photos - see test report - serve only to supplementary understanding and do not constitute any own part of the test report.

### Measurement uncertainty

Unless otherwise stated all dimensions are measured to an accuracy according to DIN 7168-g for old constructions resp. DIN ISO 2768 part 1 "c" for new constructions. For all other physical values the measurement uncertainty is < 5 %.



## General examination

### Dimensions (mm) without armrests

Overall height: 900

Overall width: 505

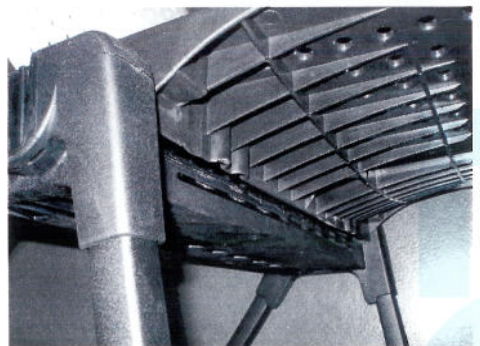
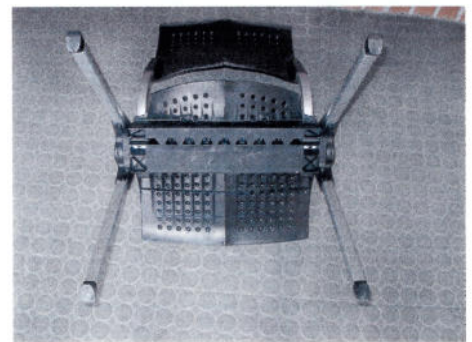
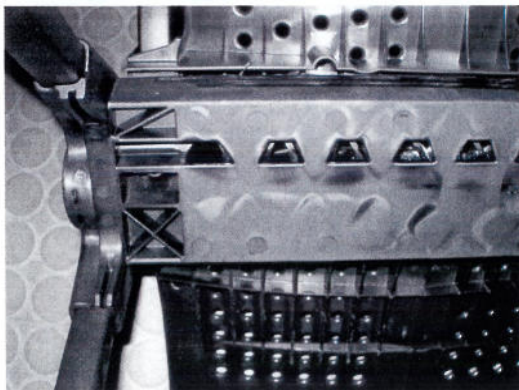
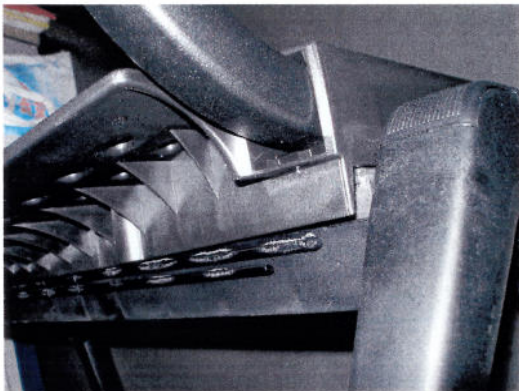
Overall depth: 595

**Weight:** 4,5 kg

### Brief description of the sample

Four legged Visitor's chairs without armrests



- Legs and backrest bearing made of aluminium square tube 24 x 24 x 2 mm
- Traverse made of plastic (PA 6 GF 30)
- Seat and backrest made of plastic (PP)
- Seat and backrest optional with cushion
- Glides made of plastic in the end of the legs



Prüfkriterium / Anforderung	Ergebnis	+ positiv - negativ ./ entfällt
<b>Technical tests</b>		
<b>Functional dimensions (mm)</b> DIN EN 13761 cl. 4	Requirement met	
Seat height:        a        380 to 480 mm (measured with dummy of EN 1335 - 1)	425	+
Seat depth:        b        min. 360 mm (measured 230 mm above loaded seat)	440	+
Seat with:        d        min. 400 mm	425	+
Clear distance between arm rests:        e        min. 460 mm	./.	./.
<b>Design</b>	Requirement met	
- Accessible edges and corners free of burrs; cut off or rounded (haptic test);		+
- Wooden chairs shall be free of devaluing knots, insect attack wood, fungal decay and rough hewn		./.
- All metal parts, visible during normal use, shall be protected against corrosion		+



H:\datad\PI\Qmb\Public\Berichte\2007\7361839e.doc/ page 5 of 7

Prüfkriterium / Anforderung	Ergebnis	+ positiv - negativ ./ entfällt
<p><b>Test of static and dynamic strength</b> <b>Requirements (DIN EN 13761, table 1, ed. 12.2002)</b> <b>Test procedure (DIN EN 1728, ed. 08.2004)</b></p> <p><b>Test Conditions</b></p> <p>6.2 Static load of seat and back 10 cycles Seat load 1.600 N, Back load 560 N, reduced to 410 N</p> <p>6.2.2 Static load of seat front edge 10 cycles</p> <p>Seat load 1.300 N, 6.8 Seat front edge fatigue test 50 000 cycles, load 1000 N</p> <p><b>Test of static and dynamic strength</b> <b>For four legged chairs</b></p> <p><b>Tilt-fall-test following DIN 68 878, part 1, ed. 01.1987</b></p> <p><b>Test conditions</b></p> <p>Height of the tilted legs: 30 mm Test frequency: 10 min<sup>-1</sup> Proof load forwards and rearwards: 850 N Proof load to the left and right: 425 N</p> <p>Point of entry above the loaded seat: 300 mm</p> <p>Number of cycles each test sequence: 20 000*)</p> <p><b>Requirements</b> No fractures or significant deformation, that affects the safe use of the chair, may occur</p>	<p>Requirements met</p>   <p>Requirements met</p>	<p>+</p> <p>+</p> <p>+</p> <p>+</p>
<p>*) Increased number of cycles for chairs for contractual use</p>		

H:\datad\p\Qmb\Public\Berichte\2007\7361839e.doc/ page 7 of 7