

A minimalist line drawing of an office chair, showing the backrest, seat, armrests, and base. The drawing is composed of white outlines on a solid pink background.

evaTM

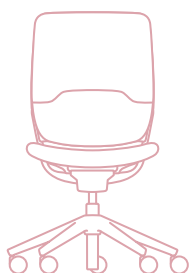
responsible, innovative... beautiful

Technical Document

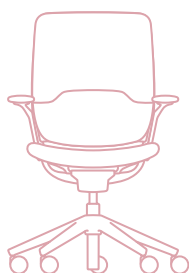
orangebox

Eva places greater emphasis on user experience, comfort & design whilst continuing our commitment to lead by example in environmentally responsible product design & manufacture.

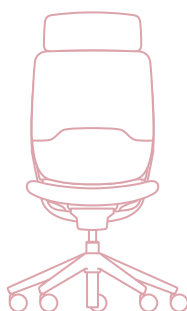
STATEMENT OF LINE



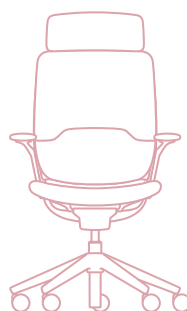
eva-HB
w690/d690/h1040



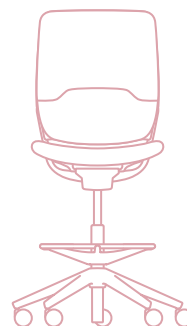
eva-HBA
w690/d690/h1040



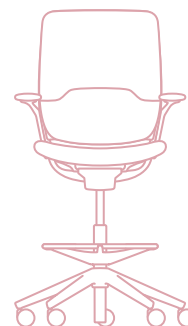
eva-HBH
w690/d690/h1200



eva-HBHA
w690/d690/h1200



eva-HBC
w690/d690/h1250



eva-HBCA
w690/d690/h1250

Standard Product Information

Castors / Glides: Ø65mm hard tyre on standard task chairs and black glides on counter-height chairs.

Base: Ø26.5" die-cast aluminium. Silver powder coated as standard.

Gaslift: Brushed chrome as standard, 150mm height adjustment.

Mechanism: Weight balancing, suitable for 50kg to 150kg. 20° recline (3:1 ratio). No travel limiter control as standard.

Seat: Integrated seat height & depth controls. 76mm depth adjustment.

Seat cushion: CMHR moulded foam, panelled upholstery.

Arms: Die-cast aluminium silver powder coated as standard. 100mm Height adjustable with rotating soft-touch armpads in black.

Back Yoke: Die-cast aluminium. Silver powder coated as standard.

Back Frame: Black or white.

Mesh: Self-supporting multi-density mesh. 100% polyester. Colour co-ordinated with the plastic trim choice.

Headrest: Colour matched to the plastic trim & the fabric is matched to the seat upholstery.

Optional Upcharges

Castors: Ø65mm soft tyre.

Base: 26.5" die-cast aluminium. Powder coated in textured black or white. Or polished.

Mechanism: Weight balancing mechanism with 3 position travel limiter & lock for the upright position. 4° forward tilting weight balancing mechanism, with 3 position travel limiter & lock for the upright position.

Additional lumbar support: 80mm height and 25mm depth adjustment. Air-cell lumbar pad.

Coat-hanger: Colour matched to plastic trim colour.

eva



orangebox



Vital Statistics

User weight range:	50 to 150kg
Seat height (task):	420 – 570mm
Seat height (counter):	TBC
Seat depth adjustment:	76mm
Seat cushion width:	515mm
Seat cushion depth:	470mm
Effective seat depth:	400 – 476mm

(lumbar point to front of seat)

Mesh: Self-supporting multi-density mesh provides lumbar support.

Additional lumbar support:

Height adjustment – 80mm

Depth adjustment – 25mm

Arm height adjustment: 100mm

Arm rotation: 15° inward & 170° outward rotation
(with auto safety lock in the forward position)

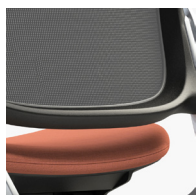
Standards & Testing

Designed to conform to the following British, European & U.S. Standards:

BS EN 1335 - 1 : 2000	Part 1 – Dimensions, determination of dimensions Part 2 – Safety requirements Part 3 – Test methods
BS EN ISO 9241-5:1999	Ergonomic requirements for office work with visual display terminals (VDT's) Workstation layout and postural requirements.
BS 5459 - 2 : 2000	Specification for Performance Requirements and Tests for Office Furniture.
ANSI / BIFMA X5.1 – 2002	American National Standard for Office Furniture
BIFMA G1 – 2002	Ergonomics Guideline for Visual Display Terminal Furniture used in Office Spaces

OPTIONS & FINISHES

Plastic Trim - back frame & seat

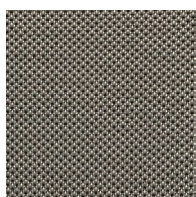


black

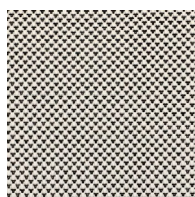


white

Mesh



Carbon



Ash

Aluminium Trim - yoke & arm supports



Silver



Black



White



Polished

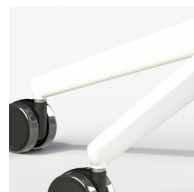
Base Finish



Silver



Black



White



Polished

Please refer to the price list for further information on option specification.

Please Note: Soft-touch arm pads available in black only. Additional lumbar (when specified) is colour matched to the plastic trim. Headrest upholstery is matched to the seat fabric.