

HermanMiller  
Embody®



So intelligent, sitting in it actually helps you think



## **Embody**

**Designed by Bill Stumpf and Jeff Weber**

Embody began with the recognition of a previously unsolved problem: the lack of physical harmony between people and their technology. Spending too much time sitting in front of our laptops or staring at our tablets, moving nothing but our fingers, can make us stiff and tired because our bodies are made to move. With Embody, designers Bill Stumpf and Jeff Weber set out to solve this problem.

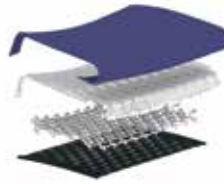
More than 30 physicians and PhDs in the fields of biomechanics, vision, physical therapy, and ergonomics contributed their expertise to help guide the development of this chair. As a result, Embody has set a new benchmark for pressure distribution, natural alignment, and support for healthy movement in ergonomic seating.



## Performance

You feel Embody's Pixelated Support™ the moment you sit down – a sense that you are floating, yet perfectly balanced. Thanks to a dynamic matrix of pixels, Embody's seat and back surfaces automatically conform to your body's micro-movements, distributing your weight evenly as you sit. This reduces pressure and encourages movement, both of which are key to maintaining healthy circulation and focus.

Embody's back is designed like yours, with a central spine and flexible ribs. The Backfit™ adjustment allows you to position the backrest in line with your spine's natural curve, so you achieve a neutral, balanced posture. Once the chair is tuned to fit you, the backrest adapts to your movement, adjusting automatically to your shifting positions. Whether you lean forward or recline, support remains constant.



A combination of support layers in Embody's seat work together to reduce seated pressure. These layers were designed to allow for airflow, keeping you cool and comfortable as you sit.



The Backfit adjustment lets the chair's back embrace your spine's unique curves, holding your head in alignment with your technology.

Embody's tilt technology keeps your back at a proper angle to the seat, allowing your body to move naturally into the most healthful seated postures while keeping your pelvis stable.



Embody's narrow backrest lets your arms and shoulders move unimpeded. This movement helps open your lungs and encourages deeper breathing and more focused thinking.

## Design

Form doesn't just follow function with Embody. Function is on full display. Every part of the chair was designed to serve a very specific, healthful purpose. Embody's technology isn't hidden, but is instead part of its aesthetic.

After years of research, design, building, and testing – and then doing it all over again (and again) – the art of design and the science of seating came together perfectly to create Embody.

## About Bill Stumpf and Jeff Weber

The Embody story began in the design studio of Jeff Weber and the late Bill Stumpf, who worked with Herman Miller for 30 years on a number of products, including the Ergon® chair, Ethospace® system, and Equa® and Aeron® chairs, which he designed with Don Chadwick. Bill passed away during the development of Embody, and Jeff carried on. "Bill's design spirit will inspire all my future work," says Weber, whose design credits also include the Caper® chair.



Bill Stumpf



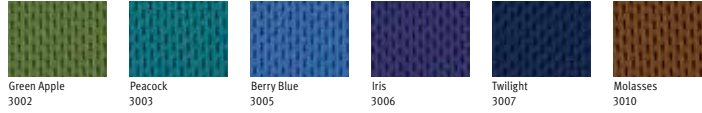
Jeff Weber

## Materials

Embody comes in a range of textile colours and a choice of frame and base finishes to allow you to personalise the look of your chair. Please speak to your Herman Miller representative for the most current textiles and materials available.

### Embody Chair

#### Seat & Back Rhythm Price Band 2



Green Apple  
3002

Peacock  
3003

Berry Blue  
3005

Iris  
3006

Twilight  
3007

Molasses  
3010



Mulberry  
3011

Mink  
3013

Black  
3014

Charcoal  
3015

#### Balance Price Band 6



Green Apple  
3506

Blue Moon  
3507

Berry Blue  
3509

Iris  
3510

Carbon  
3512

Black  
3513

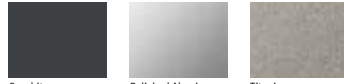
#### Frame Finish



Graphite  
G1

White  
91

#### Base Finish



Graphite  
G1

Polished Aluminum  
CD

Titanium  
XT

#### Armpad Finish



Black

#### Family Work Chair

#### Overview

Maximum User Weight 136 kg/ 300 lbs  
Population Range 2nd–98th Percentile

#### Back Support

PostureFit® Sacral Support Standard  
Lumbar Support Standard  
Thoracic Support Standard

#### Seat Height

Extended-Height Range 432mm–559mm

#### Seat Depth

Adjustable Seat 381mm–457mm

#### Tilt

Tilt Limiter Standard

#### Arm Options

No Arms  
Fully Adjustable Arms

#### Environmental Highlights

Recyclability Up to 95%  
BIFMA level® 3  
GREENGUARD® Gold  
Cradle to Cradle® Silver

For more information, please visit [hermanmiller.co.uk](http://hermanmiller.co.uk) or call +44 (0)845 226 7201.

® level is a registered trademark of BIFMA International.  
® GREENGUARD is a registered trademark of the GREENGUARD Environmental Institute.  
® Cradle to Cradle is a registered trademark of McDonough Braungart Design Chemistry.

© 2014 Herman Miller, Inc. PB1965  
All rights reserved.

